

Explanation of Key Trends - Fine Particulate Matter (PM₁₀)

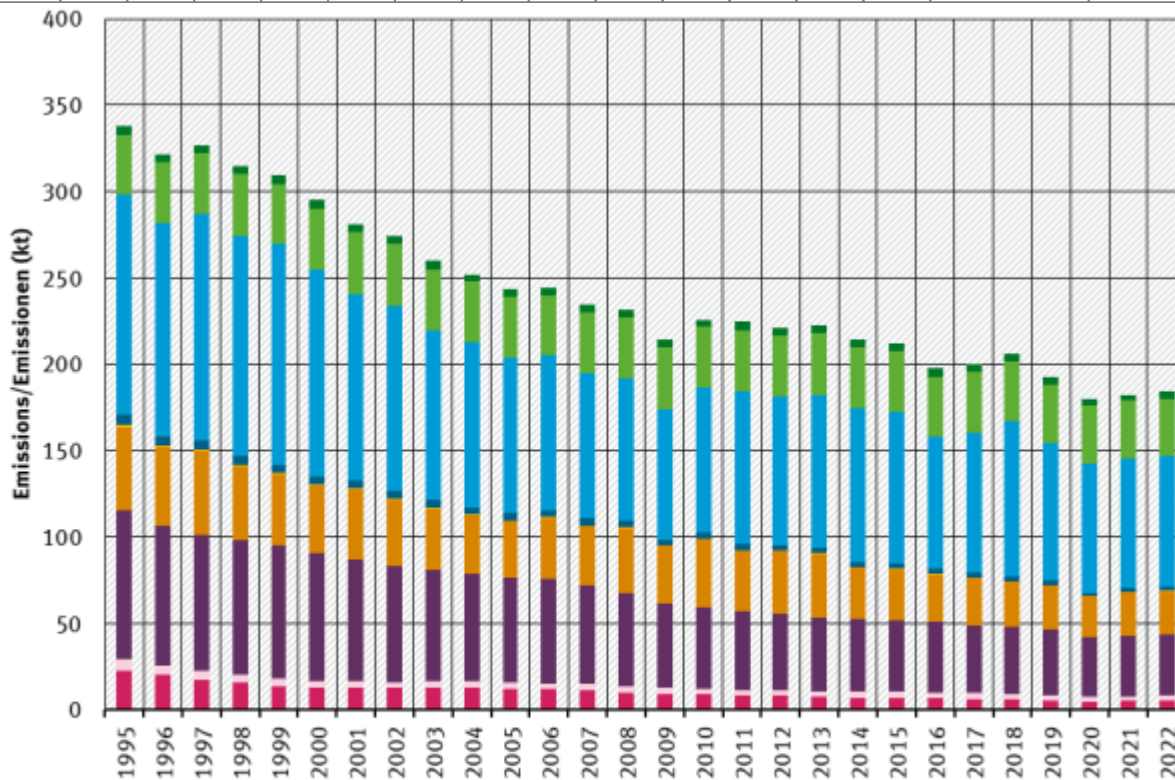
Main drivers

Between 1995 and 2021 the **total PM₁₀ emissions dropped by 47.4%**. The Main Drivers for PM_{sub>10} emissions are **Fuel Combustion (NFR 1.A)** with 48% of total 1995 emissions and a 60% reduction between 1995 and 2021 and as a sum the **Industrial Processes (NFR 2)** (and especially **Handling of Bulk Products NFR 2.L** therein) with 40% of total 1995 emissions and a 43% reduction.</sub>

Within NFR 1.A, **Transport (NFR 1.A.3)** produces the biggest part of PM_{sub>10} emissions. Here, about three quarters of the 2021 Transport PM_{sub>10} emissions are produced by **Road Transport (NFR 1.A.3.b)**, half of which is directly caused by **fuel combustion (NFR 1.A.3.b.i - iv)** and the other half by **road abrasion and tyre and brake wear (NFR 1.A.3.b.vi - vii)**.</sub></sub>

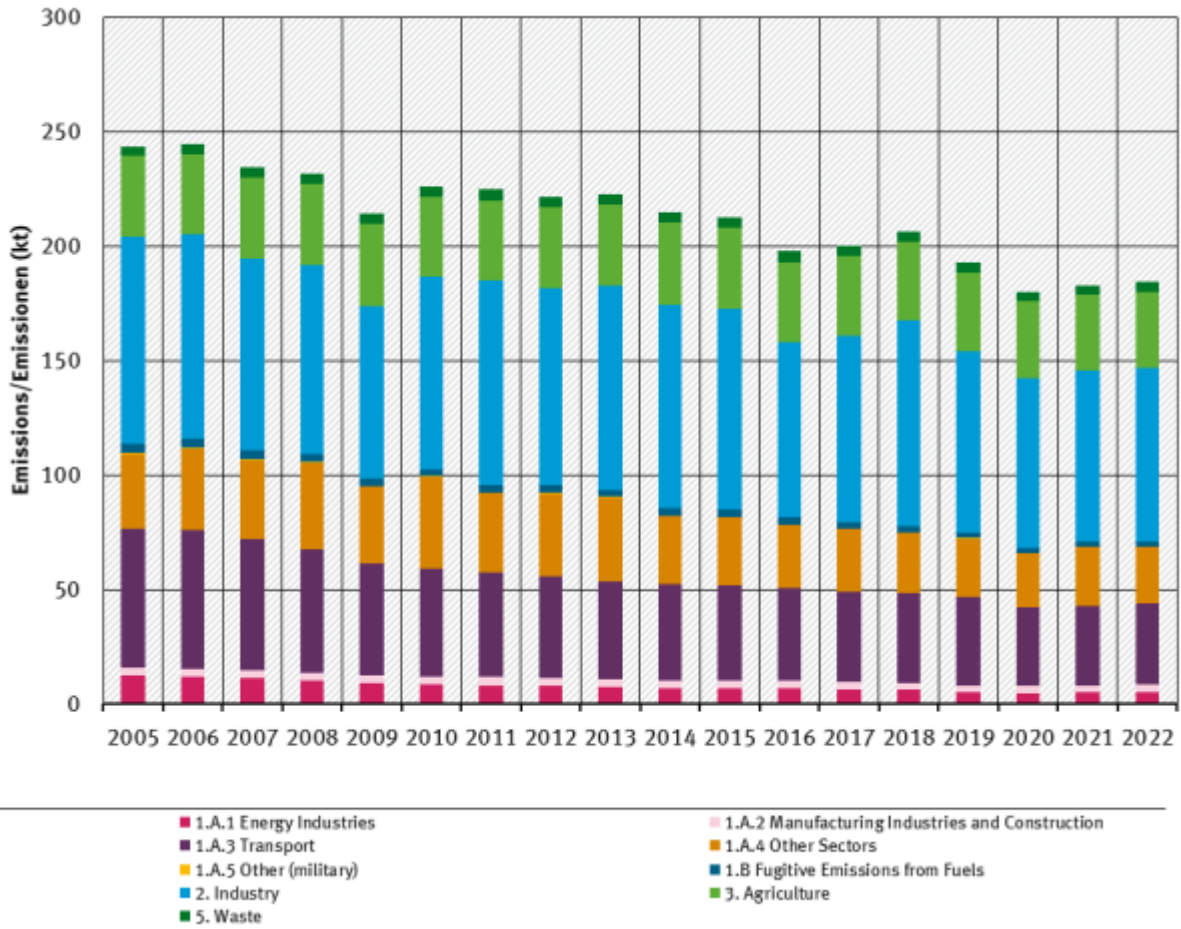
Table: PM_{sub>10} Emissions 1990-2021</sub>

Total Emissions (kt)														Trend: latest compared to	
1995	2000	2005	2010	2011	2012	2013	2014	2015	2016	2017	2018	2019	2020	1995	last years
342	298	245	226	225	222	224	216	214	199	202	207	194	180	▼ -47.4%	▼



- 1.A.1 Energy Industries
- 1.A.2 Manufacturing Industries and Construction
- 1.A.3 Transport
- 1.A.4 Other Sectors
- 1.A.5 Other (military)
- 2. Industry
- 3. Agriculture
- 5. Waste
- 1.B Fugitive Emissions from Fuels

PM_{sub>10} trend by sector</sub>



PM_{sub>10}</sub> trend by sector, from 2005